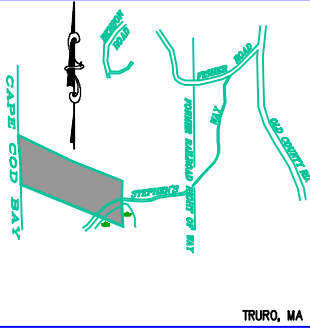


\\Server\csharwell\project\Truro\_25\_Stephens\_Way\Coastal\_Engineering\C16863-ALTERNATIVE1.dwg Oct 02 2007 - 8:36pm

NO.	PAGE



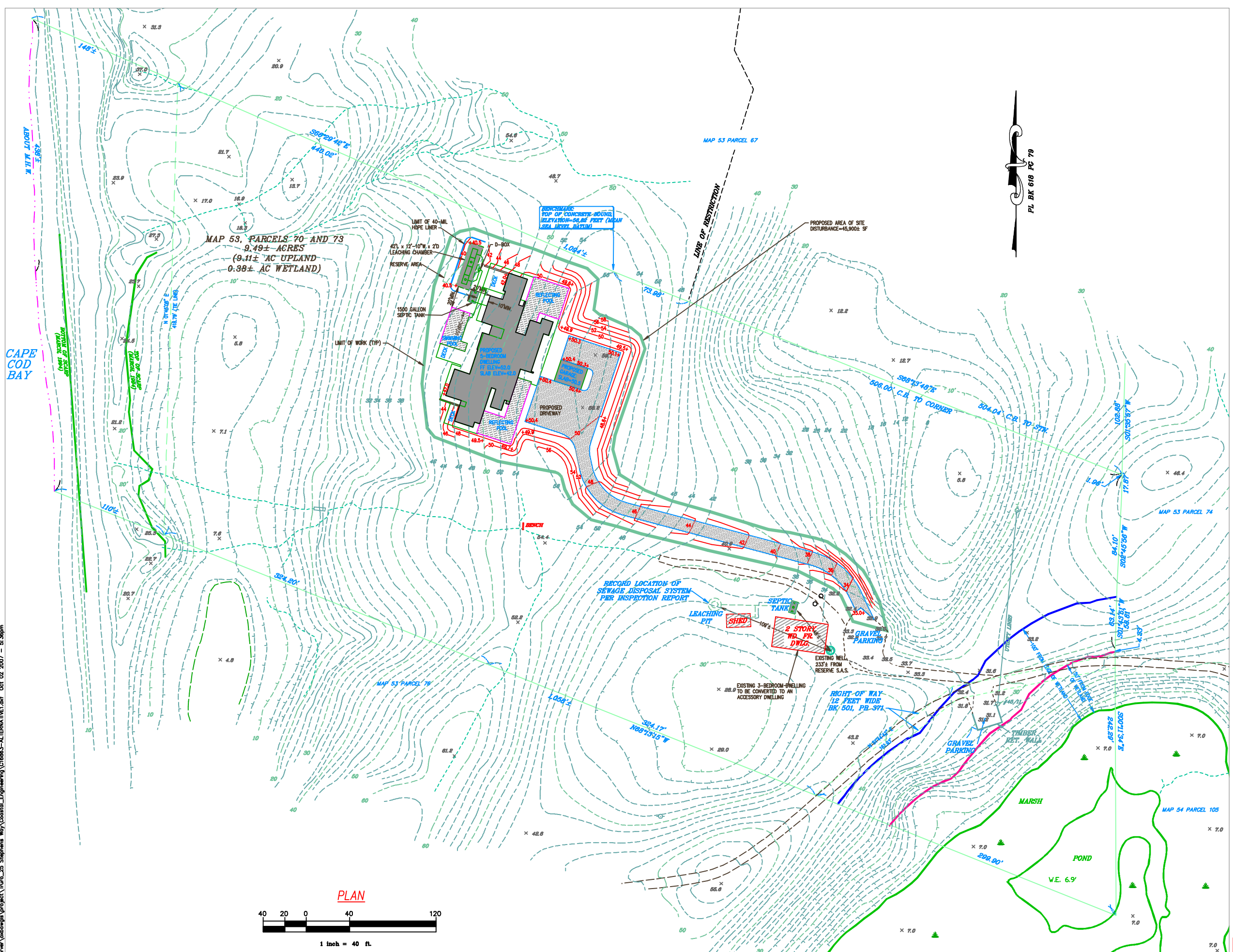
TRURO, MA  
KEY MAP  
NO SCALE

**PLAN REFERENCES:**  
ASSESSORS MAP 53, PARCELS 70 AND 73  
PLAN BOOK 6, PAGE 127  
PLAN BOOK 245, PAGE 81  
PLAN BOOK 283, PAGE 63  
PLAN BOOK 618, PAGE 79

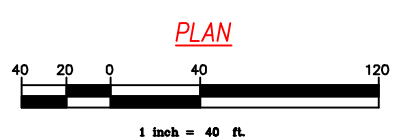
TOPOGRAPHICAL INFORMATION AND EXISTING CONDITIONS FROM "PRELIMINARY SUBDIVISION PLAN OF LAND IN TRURO," BY SLADE ASSOCIATES, INC., DATED MARCH 20, 2007.

**FLOOD NOTE:**  
FLOOD ZONE C AS SHOWN ON FEMA FIRM PANEL #255222 0012 C, REVISED JULY 15, 1992.

**DATUM NOTE:**  
ELEVATIONS SHOWN HEREON ARE BASED ON MEAN SEA LEVEL DATUM (M.S.L.)



- LEGEND**
- EXISTING**
- BOUND
  - WELL
  - MISC. SIGN
  - POST
  - UTILITY POLE
  - EDGE OF WETLAND
  - FENCE
  - OVERHEAD UTILITY LINE
  - WATER LINE
  - CONTOUR
  - SPOT ELEVATION
- PROPOSED**
- CONTOUR
  - SPOT ELEVATION



PROJECT: DONALD KLINE  
25 STEPHENS WAY  
TRURO, MA

SHEET TITLE: ALTERNATE PLAN 1  
PROPOSED DWELLING 50' WEST

SCALE: AS NOTED

DRAWING FILE: C16863-ALTERNATIVE1.DWG

DATE: OCTOBER 2, 2007

DRAWN BY: JKL

CHECKED BY:

PROJECT NO. C16863.01

1 OF 2 SHEETS

**ISSUED FOR REGULATORY REVIEW - NOT FOR CONSTRUCTION**

SKC-1