

MEPA Analyst: *Bill GAGE*

Phone: 617-626-1025

NPC

Notice of Project Change

The information requested on this form must be completed to begin MEPA Review of a NPC in accordance with the provisions of the Massachusetts Environmental Policy Act and its implementing regulations (see 301 CMR 11.10(1)).

Project Name: Solid Waste Recycling and Transfer Facility		EOEA #: 4895	
Street: 1080 Airport Road			
Municipality: Fall River		Watershed: Buzzards Bay	
Universal Tranverse Mercator Coordinates: N 3,024,900m, E46,023,300m		Latitude: 71° 06' 20.42" Longitude: 41° 44' 54.64"	
Status of project construction: 0% complete			
Proponent: Browning-Ferris Industries, Inc. (MA)			
Street: 1080 Airport Road			
Municipality: Fall River		State: MA	Zip Code: 02720
Name of Contact Person From Whom Copies of this NPC May Be Obtained: Michael Quatromoni			
Firm/Agency: SITEC Environmental, Inc.		Street: 769 Plain Street, Unit C	
Municipality: Marshfield		State: MA	Zip Code: 02050
Phone: (781) 319-0100	Fax: (781) 834-4783	E-mail: mquatromoni@sitec-engineering.com	

In 25 words or less, what is the project change? The project change involves . . .

Construction of solid waste handling facility that will accept an average of 1,500 tpd of MSW and C&D for transfer, processing and recycling after current landfilling operations cease.

Date of ENF filing or publication in the Environmental Monitor: (SEE PART A)

Was an EIR required? Yes No; if yes,
 was a Draft EIR filed? Yes (Date: SEE PART A) No
 was a Final EIR filed? Yes (Date: SEE PART A) No
 was a Single EIR filed? Yes (Date:) No

Have other NPCs been filed? Yes (Date(s): SEE PART A) No

If this is a NPC solely for lapse of time (see 301 CMR 11.10(2)) proceed directly to

“ATTACHMENTS & SIGNATURES” on page 4.

PERMITS / FINANCIAL ASSISTANCE / LAND TRANSFER

List or describe all new or modified state permits, financial assistance, or land transfers not previously reviewed:

Are you requesting a finding that this project change is insignificant? (see 301 CMR 11.10(6))
 Yes No; if yes, attach justification.

Are you requesting that a Scope in a previously issued Certificate be rescinded?
 Yes No; if yes, attach the Certificate

Are you requesting a change to a Scope in a previously issued Certificate? Yes No; if yes, attach Certificate and describe the change you are requesting:

Summary of Project Size & Environmental Impacts	Previously reviewed	Net Change	Currently Proposed
LAND			
Total site acreage	216	0	
Acres of land altered		4.40	
Acres of impervious area		3.50	
Square feet of bordering vegetated wetlands alteration		0	
Square feet of other wetland alteration		0	
Acres of non-water dependent use of tidelands or waterways		0.00	
STRUCTURES			
Gross square footage		37,000	
Number of housing units		0	
Maximum height (in feet)		38	
TRANSPORTATION (No Change)			
Vehicle trips per day			
Parking spaces			
WATER/WASTEWATER (No Change)			
Gallons/day (GPD) of water use			
GPD water withdrawal			
GPD wastewater generation/ treatment			
Length of water/sewer mains (in miles)		< 1	

Does the project change involve any new or modified:

1. conversion of public parkland or other Article 97 public natural resources to any purpose not in accordance with Article 97? Yes No

2. release of any conservation restriction, preservation restriction, agricultural preservation restriction, or watershed preservation restriction? Yes No

3. impacts on Estimated Habitat of Rare Species, Vernal Pools, Priority Sites of Rare Species, or Exemplary Natural Communities? Yes No

4. impact on any structure, site or district listed in the State Register of Historic Place or the inventory of Historic and Archaeological Assets of the Commonwealth?

Yes No; if yes, does the project involve any demolition or destruction of any listed or inventoried historic or archaeological resources? Yes No

5. impact upon an Area of Critical Environmental Concern? Yes No

If you answered 'Yes' to any of these 5 questions, explain below:

PROJECT CHANGE DESCRIPTION (attach additional pages as necessary). The project change description should include:

(a) a brief description of the project as most recently reviewed

(b) a description of material changes to the project as previously reviewed,

(c) the significance of the proposed changes, with specific reference to the factors listed 301 CMR 11.10(6), and

(d) measures that the project is taking to avoid damage to the environment or to minimize and mitigate unavoidable environmental impacts. If the change will involve modification of any previously issued Section 61 Finding, include a proposed modification of the Section 61 Finding (or it will be required in a Supplemental EIR).

(a) Description of Project as Most Recently Reviewed:

The most recent review by the Executive Office of Environmental Affairs (EOEA) for the BFI Fall River Landfill involved a temporary increase in the amount of solid waste disposed of at the Fall River Landfill on a daily basis. The Notice of Project Change (NPC) filed with the EOEA proposed to increase the maximum daily waste acceptance rate from 1,950 tons per day (tpd) to 2,150 tpd with an annual limit of 468,000 tons. On September 23, 1999, a Certificate of the Secretary of the EOEA was issued following the review of the NPC with a determination that the project did not require further MEPA review. A copy of the Certificate of the Secretary of the EOEA has been included in this submittal and can be found in Attachment 1. More sustentative reviews were performed in 1993, 1995 and 1996 and were associated with the Phase III lateral landfill expansion, the Phase II vertical landfill expansion and a proposal by BFI to initiate recycling activities at this facility that are similar to those proposed within this NPC, respectively. Copies of these Certificates are also included herein. Below is a summary of all reviews that have been completed by the EOEA (MEPA Unit) for this facility:

MEPA Project History

- In April 1982, an Environmental Notification Form (ENF) for landfill operations and closure of Phase I Landfill area and for operations in the Phase II Landfill area was submitted to the EOEA for review. On May 24, 1982, a Certificate was issued by the Secretary of the EOEA with a determination that no Environmental Impact Report (EIR) was required for the closure of Phase I and further determined that no EIR would be required for Phase II operation.
- In September 1983, an ENF for the proposed Phase III expansion was submitted to the EOEA for review. On October 7, 1983, the Secretary of the EOEA issued a determination that an EIR would be required for the Phase III expansion. In January 1985, a draft EIR was submitted to the EOEA for their review and, subsequently, a final EIR was filed with the EOEA in September 1985. A Final Certificate was issued by the Secretary of the EOEA on January 7, 1986 with a determination that the project proponent had complied with the requirements of the MEPA regulations.
- In accordance with 310 CMR 19.032, MEPA was notified in a letter dated December 14, 1993, that over five (5) years had passed since the filing of the Final EIR for the Phase III expansion. This letter also highlighted activities which had taken place within the Phase III area in preparation for this expansion as well as upgrades to the environmental protection and monitoring systems as a result of technological and regulatory advances. On December 21, 1993, the Secretary of the EOEA issued a determination that no further review was required for the Phase III project. A copy of the Certificate of the Secretary of Environmental Affairs has been included in this submittal and can be found in Attachment 1
- In July 1995, a NPC was submitted to the EOEA describing the proposal for a vertical expansion on the existing Phase II Landfill. On August 9, 1995, the Secretary of the EOEA issued a Certificate with a determination that the project did not require further MEPA review. A copy of the Certificate of the Secretary of Environmental Affairs has been included in this submittal and can be found in Attachment 1
- In June 1996, a NPC was submitted to the EOEA describing the proposal for a full scale recycling facility at the BFI Fall River Landfill facility. The proposal involved the construction of a 30,000 square foot building, which would accept an average of 150 tpd of paper and cardboard for sorting and baling. An average of 150 tpd of construction and demolition (C & D) waste would also be accepted at the Phase III landfill area (then only proposed) for processing and recycling. The facility would also have included a co-mingled drop-off area to handle plastics, glass and tin generated in a curbside collection program. These recycling activities were in addition to the on-going landfill disposal operations that were being conducted within the Phase II vertical expansion area at that time. The Secretary of the EOEA issued a determination that no further review was required for the recycling facility. A copy of the Certificate of the Secretary of Environmental Affairs has been included in this submittal and can be found in Attachment 1. This facility was never

fully developed or constructed.

- On October 20, 1998, the Secretary of the EOEPA issued a determination after the review of the NPC involving the temporary (4 week) increase of the waste acceptance rate at the Fall River Landfill. The rate would be increased from 1,950 tpd to 2,350 tpd, including up to 850 tpd of municipal solid waste (MSW). The Secretary's review resulted in a determination that no further MEPA review was required.
- On September 23, 1999, a Certificate of the Secretary of Environmental Affairs was issued following the review of the NPC to increase the maximum daily waste acceptance rate from 1,950 tons per day (tpd) to 2,150 tpd with an annual limit of 468,000 tons. The Secretary determined that the project did not require further MEPA review. A copy of the Certificate of the Secretary of Environmental Affairs has been included in this submittal and can be found in Attachment 1

(b) Description of material changes to the project as previously reviewed:

BFI currently owns and operates the Fall River Landfill in Fall River, MA. This facility accepts municipal solid waste (MSW) and construction and demolition (C&D) debris residuals for disposal. BFI is approved by the DEP to accept an average of 1,500 tons of material per day with a maximum daily acceptance rate of 1,950 tons per day. Landfilling operations are currently ongoing within the Phase III landfill area, which has limited remaining disposal capacity. Upon completion of filling within the Phase III area it is anticipated that landfill operations will cease and the site will be capped and closed. The landfill gas collection system and the electrical generation facility will continue to operate at the site for an extended period of time after landfill closure.

General Description:

BFI is proposing to permit, construct and operate a 1,500 ton per day solid waste recycling and transfer station facility that will handle MSW and recycle C&D debris. This facility is intended to maintain an existing solid waste service when landfilling activities cease. The waste handling and processing operations will be conducted within a fully enclosed steel frame building. The building will have a concrete floor equipped with floor drains to collect incidental liquids (see attached Site Plan). The Recycling and Transfer Station building will be approximately 125 feet by 300 feet, or 37,000 square feet. The building includes two transfer trailer bays. The MSW Receiving Area will occupy half of the building. The remaining half of the building will be used for the C&D Receiving Area and processing. Mechanical equipment and manual operations associated with the processing of C&D, such as feed conveyors, vibratory screens, manual sorting and grinding operations, are to be located within this portion of the building. The specific models/types of equipment that will be installed and processing to be performed will be determined during the DEP permitting process.

The general operations of the facility will be to receive MSW and mixed C&D debris as separate loads. The MSW and C&D will be visually screened by trained personnel for the presence of hazardous waste, special waste, asbestos containing materials and DEP waste ban items. MSW loads will be consolidated within 100 cubic yard transfer trailers

using front end loaders. The MSW will then be transferred from the site for off-site disposal. C&D handling operations will be to separate/pull-out wood, metals and asphalt, brick and concrete (ABC) then load the sorted materials out to roll-off vehicles for transport to recyclers.

The Facility is proposed for operation (accepting incoming loads of waste) Monday through Saturday from 7:00 AM to 5:00 PM.

Facility Operations:

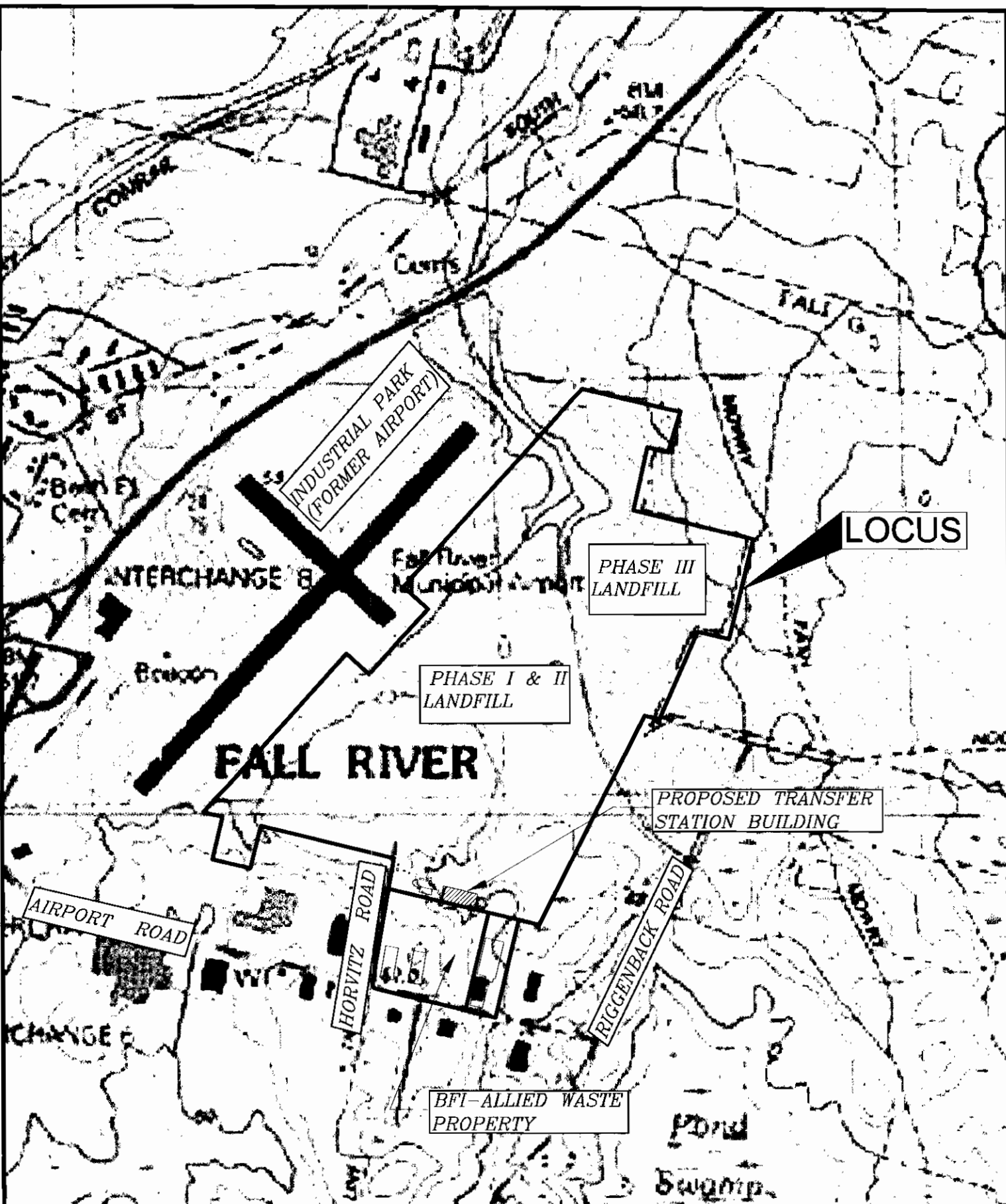
Vehicles bringing waste to this facility will be primarily vehicles with roll-off containers collected at construction or commercial sites and packer trucks used to collect MSW from residential and commercial customers. The trucks will first cross the existing scales located to the west of the proposed facility so that vehicle weights and load identification can be obtained and recorded. After crossing the scale, the trucks carrying the waste will proceed to the designated receiving bays on the southerly side of the building (either C&D or MSW) and will back in to discharge their loads on the tipping floor completely within the building. The building will have adequate floor area for as many as four (4) trucks to be unloading at one time and adequate roof clearance so that the trucks can lift up their containers entirely within the structure. There will be adequate space within the enclosed transfer trailer bays along the westerly and easterly sides of the building for the positioning of multiple transfer trailers for the consolidation of waste materials.


BFI personnel will be observing and inspecting all waste delivered to the facility for the presence unacceptable materials such as hazardous waste or DEP Waste Ban Items as they are dumped on the tipping floor. If unacceptable materials are detected during these operations, the restricted waste will be removed from the tipping floor area and properly handled in accordance with contingency plans that will be developed by BFI and approved by DEP as part of the solid waste facility permitting process. These contingency plans will include provisions for the proper containment and removal of these items from the site. Facility employees will also manually remove select recyclable materials from the waste stream on the tipping floor. These materials may include metals, clean wood or other items that can be readily removed for future recycling.

Once the materials are placed on the tipping floor they will be handled primarily by front-end loaders, excavators and laborers. The front-end loaders will consolidate MSW within the building and will top load the transfer trailers within the recessed bay located at the westerly side of the building. Recyclable materials or DEP Waste Ban Items will be loaded into roll-off containers using the excavator or the laborers working on the receiving bay floor will handle them manually. These materials will then be shipped off-site for reuse or proper disposal. Potential disposal sites for this waste include in-state or out-of-state landfills that are fully approved to manage MSW or waste to energy incineration facilities.

The C&D operations may include the following activities:

- Visual inspection and manual separation on the tipping floor;
- Material shredding to reduce particle size and facilitate handling;
- Screening to remove small fraction materials (C&D Fines);
- Manual sorting on an elevated sorting platform with possible magnetic and eddy current equipment for metals, plastics and paper;



<p>FIGURE 1</p>	<p>BASE IMAGE: USGS TOPOGRAPHIC MAP - FALL RIVER 1984</p>	<p>SITEC ENVIRONMENTAL Civil and Environmental Engineering Land Use Planning and Surveying Hazardous and Solid Waste Consultants 700 Plain Street, Unit C Marshfield, MA 02050 PHONE (781)-319-0100 FAX (781) 394-4703</p> 
<p>drawing title: LOCUS MAP</p>	<p>BFI FALL RIVER LANDFILL AIRPORT ROAD</p>	
<p>scale: 1"=1000'</p>	<p>FALL RIVER, MASSACHUSETTS</p>	