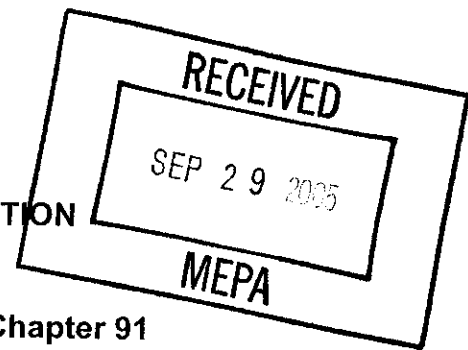


DEPARTMENT OF ENVIRONMENTAL PROTECTION  
WATERWAYS REGULATION PROGRAM



Notice of License Application pursuant to M. G. L. Chapter 91  
Waterways License Application Number W05-1417  
Irving Oil Terminals, Inc.

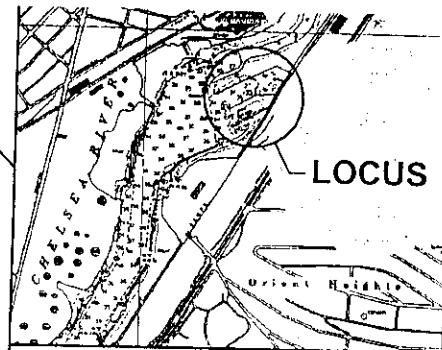
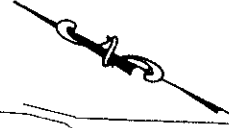
**NOTIFICATION DATE: September 30, 2005**

Public notice is hereby given of the application by the Irving Oil Terminals, Inc. to construct and maintain a mooring/berthing dolphin, fender unit and cat walk at 41 Lee Burbank Highway in the municipality of Revere in and over flowed tidelands of Chelsea River. The proposed use of the project is to provide for commercial docking and offloading of petroleum products and is a water dependent project.

The Department will consider all written comments on this Waterways application received by within 30 days subsequent to the "Notification Date". Failure of any aggrieved person or group of ten citizens or more to submit written comments to the Waterways Regulation Program by the Public Comments Deadline will result in the waiver of any right to an adjudicatory hearing in accordance with 310 CMR 9.13(4)(c).

Additional information regarding this application may be obtained by contacting the Waterways Regulation Program at (617) 292-5500. Project plans and documents for this application are on file with the Waterways Regulation Program for public viewing, by appointment only, at the address below. Written comments must be addressed to: Ben Lynch, Program Chief, WRP, One Winter St., 6<sup>th</sup> fl., Boston, MA 02108.

DATUM: MHW = +9.89'  
 NGVD = +4.85'  
 MLW = +0.34'  
 MLLW = 0.0'

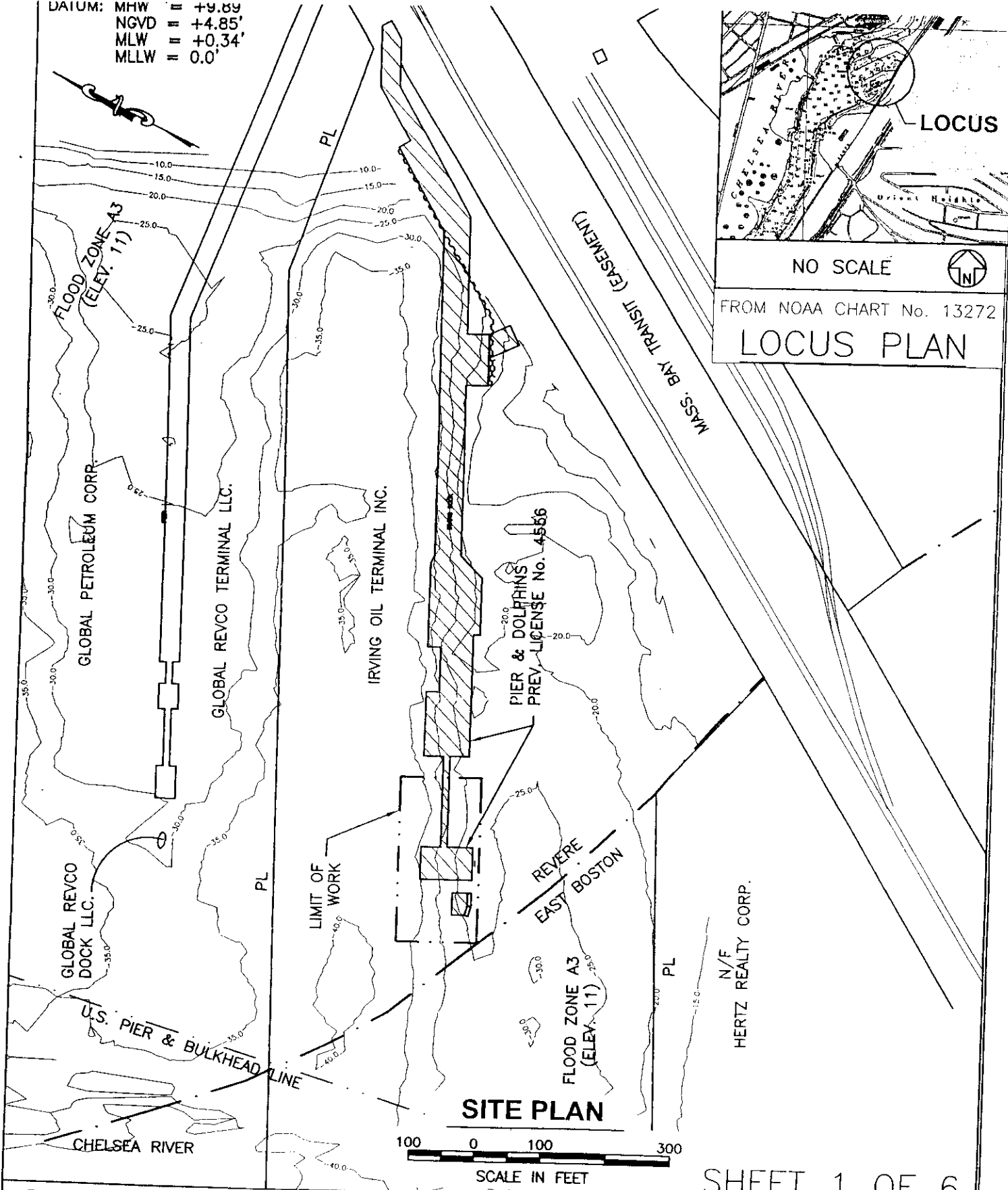


NO SCALE

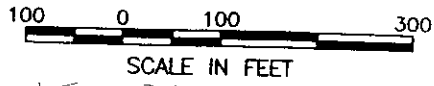


FROM NOAA CHART No. 13272

**LOCUS PLAN**

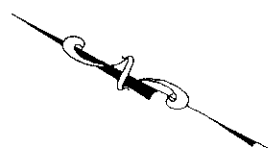


**SITE PLAN**



SHEET 1 OF 6

PLANS ACCOMPANYING PETITION OF  
 IRVING OIL TERMINALS, INC.  
 TO CONSTRUCT A PIPE PILE SUPPORTED  
 CONCRETE DOLPHIN AND FENDER UNIT  
 AND CATWALK EXTENSION  
 IN THE CHELSEA RIVER  
 AT IRVING OIL PIER  
 COUNTY OF SUFFOLK, MASS. JULY 2005



DISTANCE TO  
FEDERAL CHANNEL  
LIMIT = 950' ±

NEW FENDER UNITS, IN-LINE  
WITH EXISTING FENDER LINE

CONSTRUCTION CONTROL  
FENDER FACE TO MATCH

EXISTING DOLPHIN #3  
TO BE REMOVED

NEW 22'x22'  
CONCRETE  
DOLPHIN  
(SEE SHEET 3)

NEW CATWALK EXTENSION

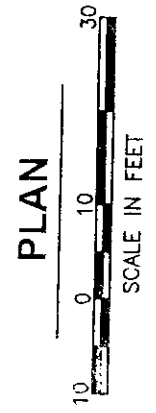
EXISTING  
CATWALK

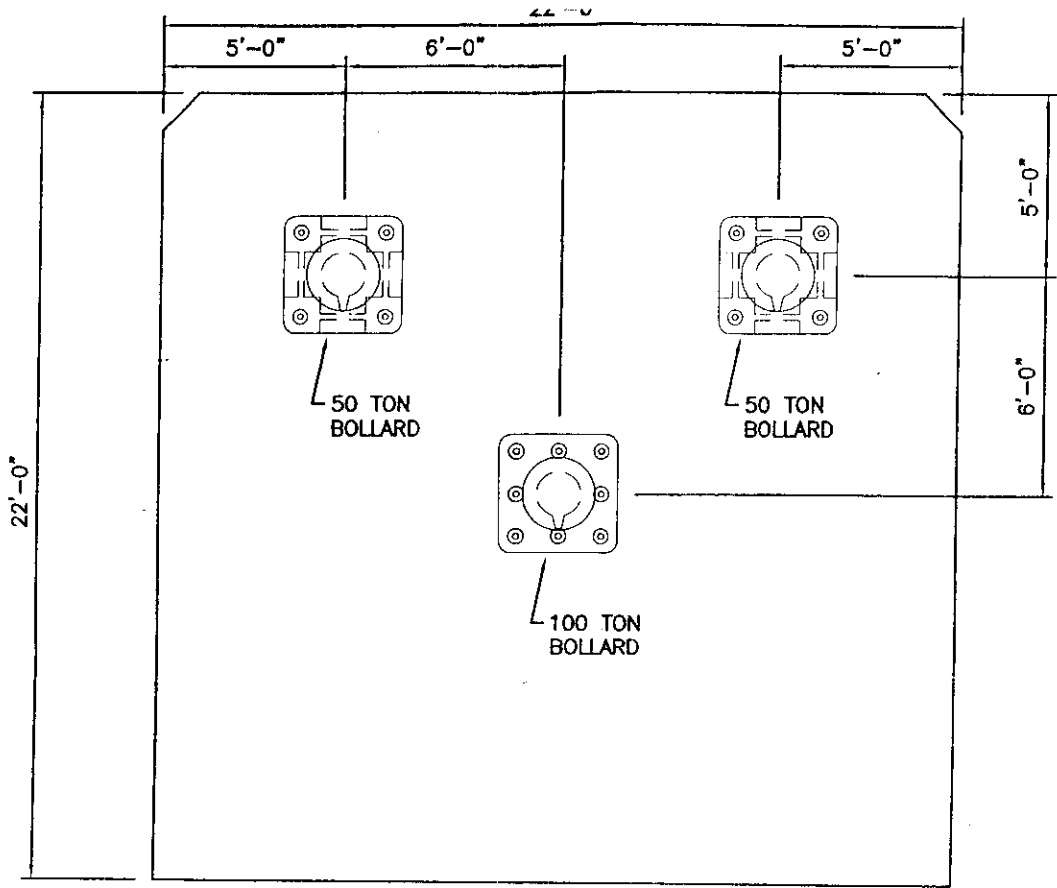
EXISTING HOSE TOWER PIER

275' ± TO MHW

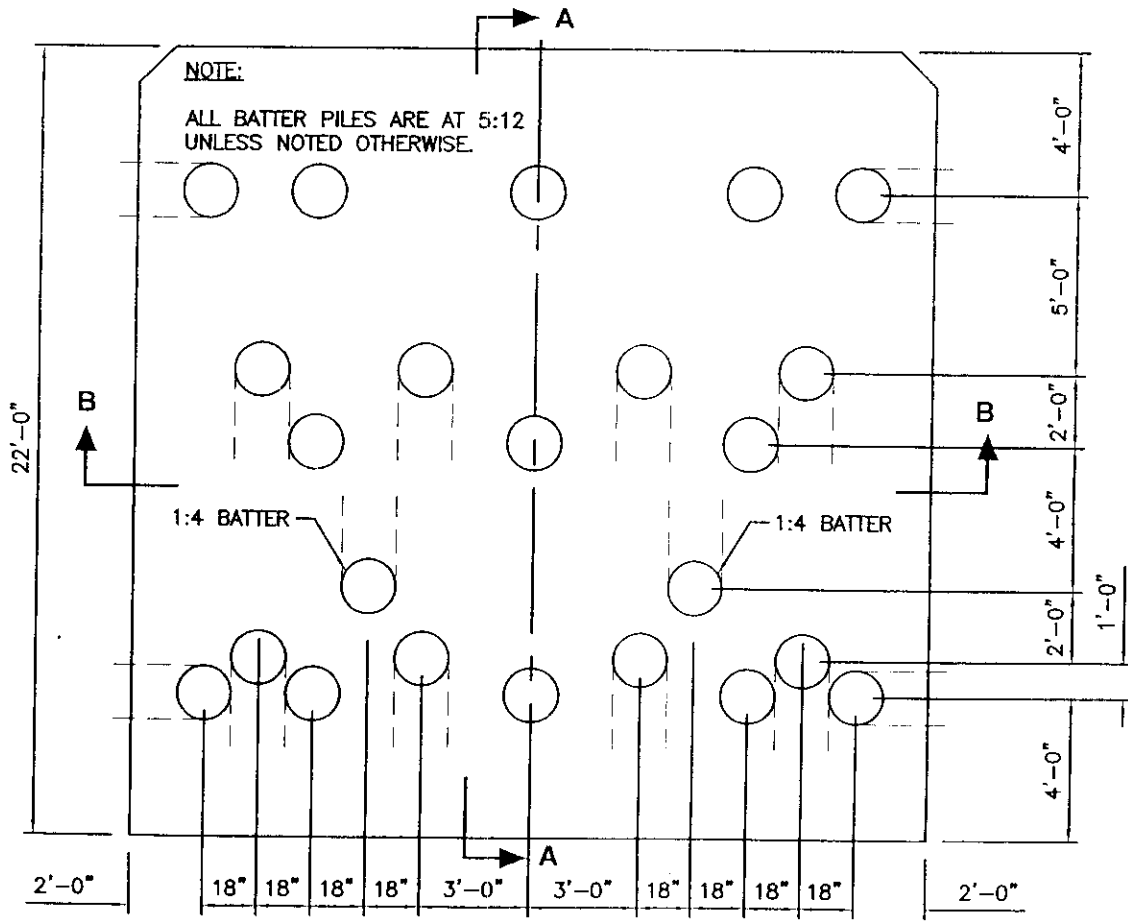
888  
888  
888

DATUM: MHW = +9.89'  
 NGVD = +4.85'  
 MLW = +0.34'  
 MLLW = 0.0'





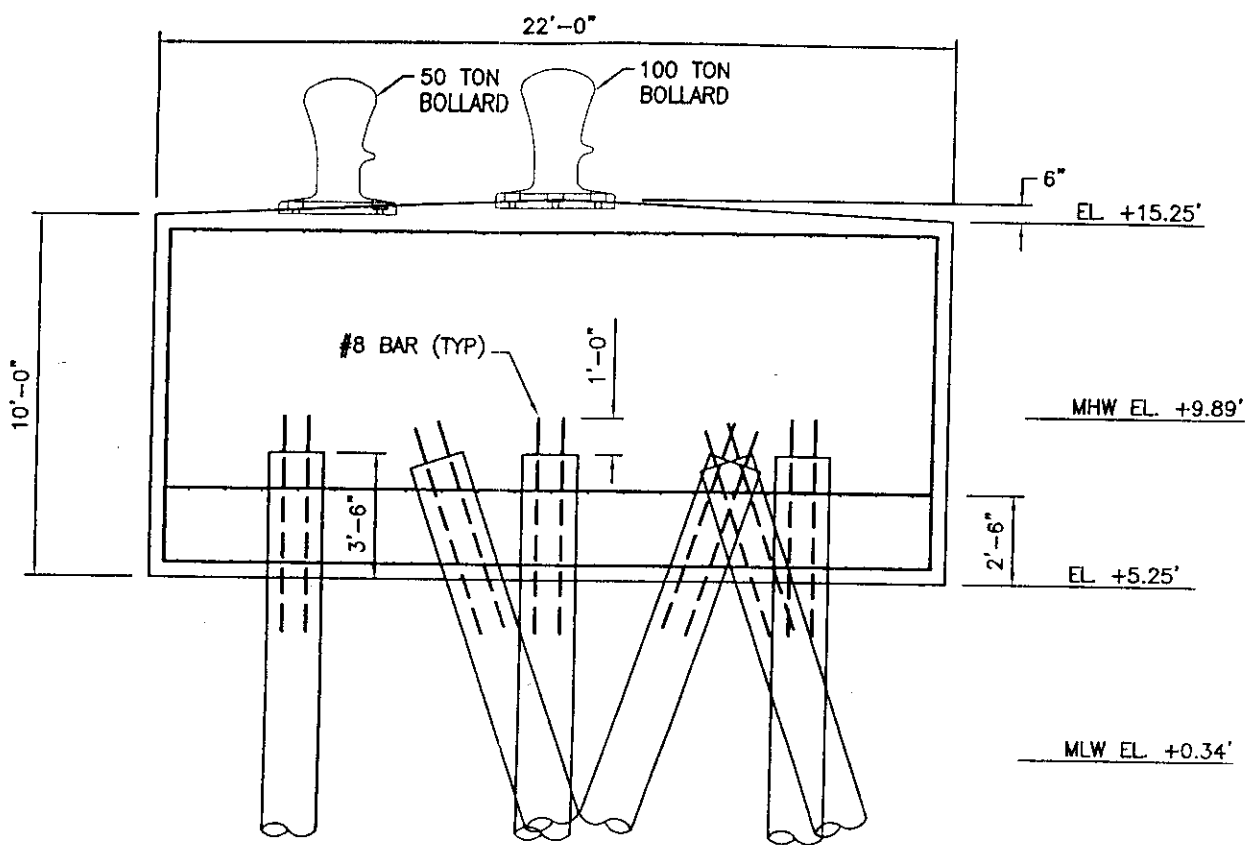
TOP PLAN



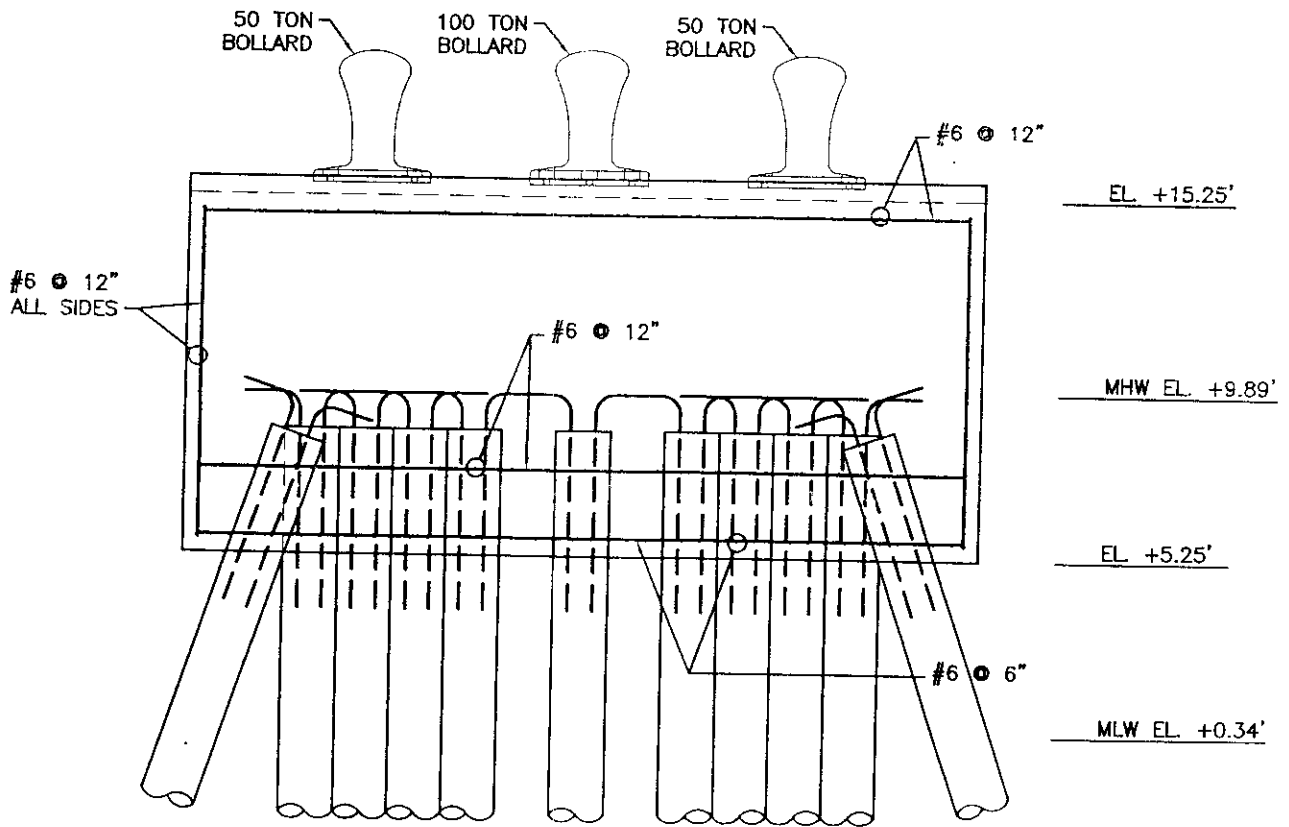
PILE PLAN @ EL. +5.25'

**DOLPHIN PLANS**





SECTION A-A

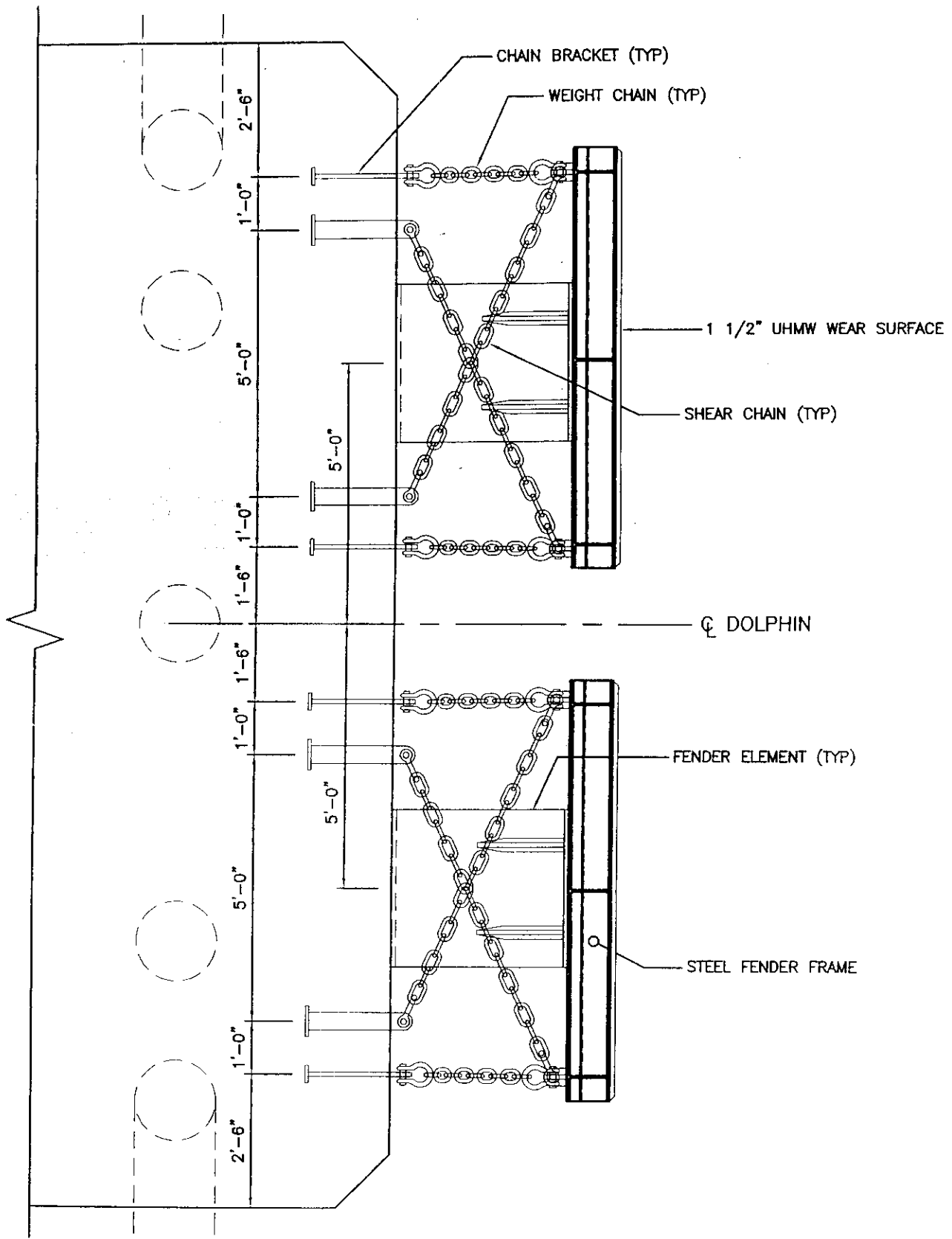


SECTION B-B

**DOLPHIN SECTIONS**



DATUM: MHW = +9.89'  
 NGVD = +4.85'  
 MLW = +0.34'  
 MLLW = 0.0'

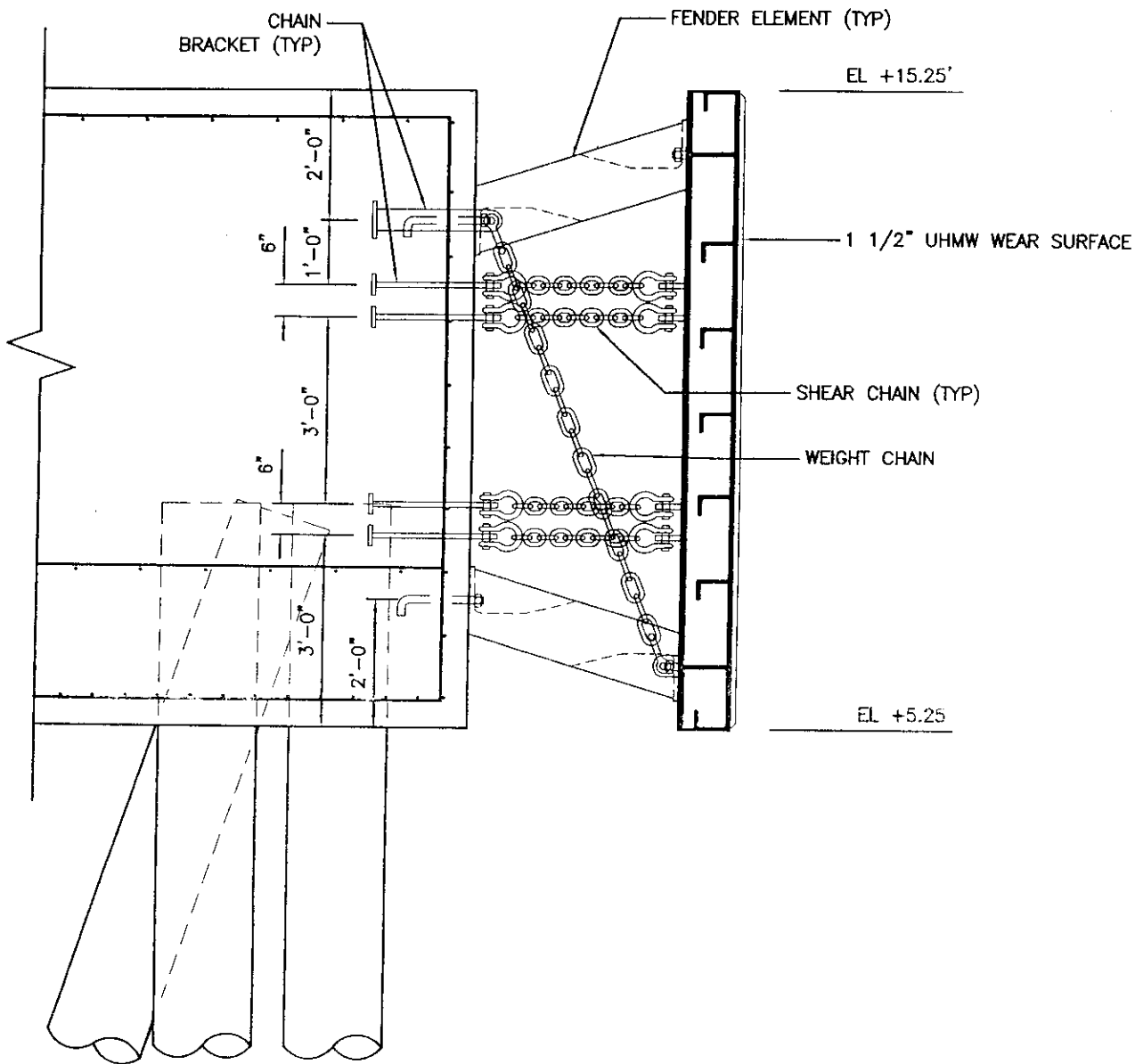


FENDER CONNECTION PLAN

FENDER PLAN



DATUM: MHW = +9.89'  
 NGVD = +4.85'  
 MLW = +0.34'  
 MLLW = 0.0'



FENDER CONNECTION SECTION

DATUM: MHW = +9.89'  
 NGVD = +4.85'  
 MLW = +0.34'  
 MLLW = 0.0'

FENDER SECTION

